

Take a step back in time and experience the sight, sound and smell of two powerful steam engines

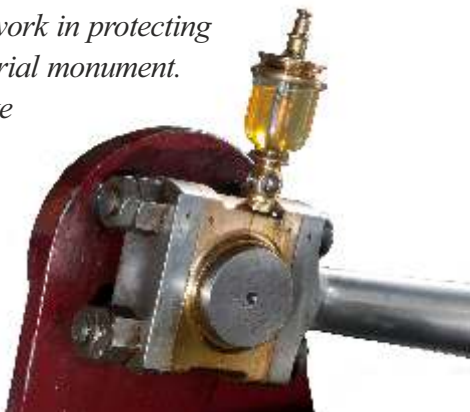


Mill Meece Pumping Station has supplied pure and wholesome water to the Potteries since 1914. The 'Gentle Giants' were replaced by electric pumps in 1979, but these horizontal steam engines have been preserved for your enjoyment.

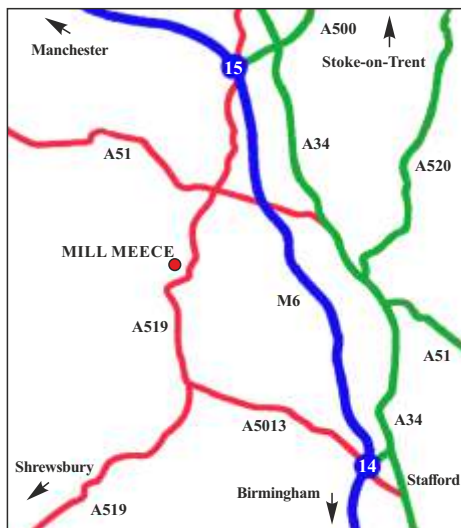
Come and join us!

The pumping station is owned by Severn Trent Water, who are grateful to the Mill Meece Pumping Station Preservation Trust for their work in protecting a unique industrial monument.

If you would like to join this friendly group of volunteers just ask for more details.



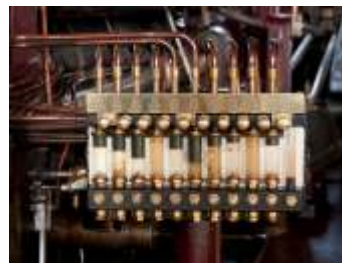
How to find us



Mill Meece is only 20 minutes from the M6, 40 minutes from Birmingham, 45 miles from Manchester, 25 miles from Shrewsbury, 10 miles from Stafford and 8 miles from Stoke-on-Trent

Modern Times at Mill Meece

The Pumping Station supplies an average of 2.2 million gallons each day to Severn Trent Water customers, but nowadays by powerful electric pumps in each of the bore holes of the first well to be sunk in 1912. After being disinfected the water is pumped four miles northwards to Hanchurch Reservoir, from where it is supplied to homes and businesses in the Newcastle and southern areas of Stoke.

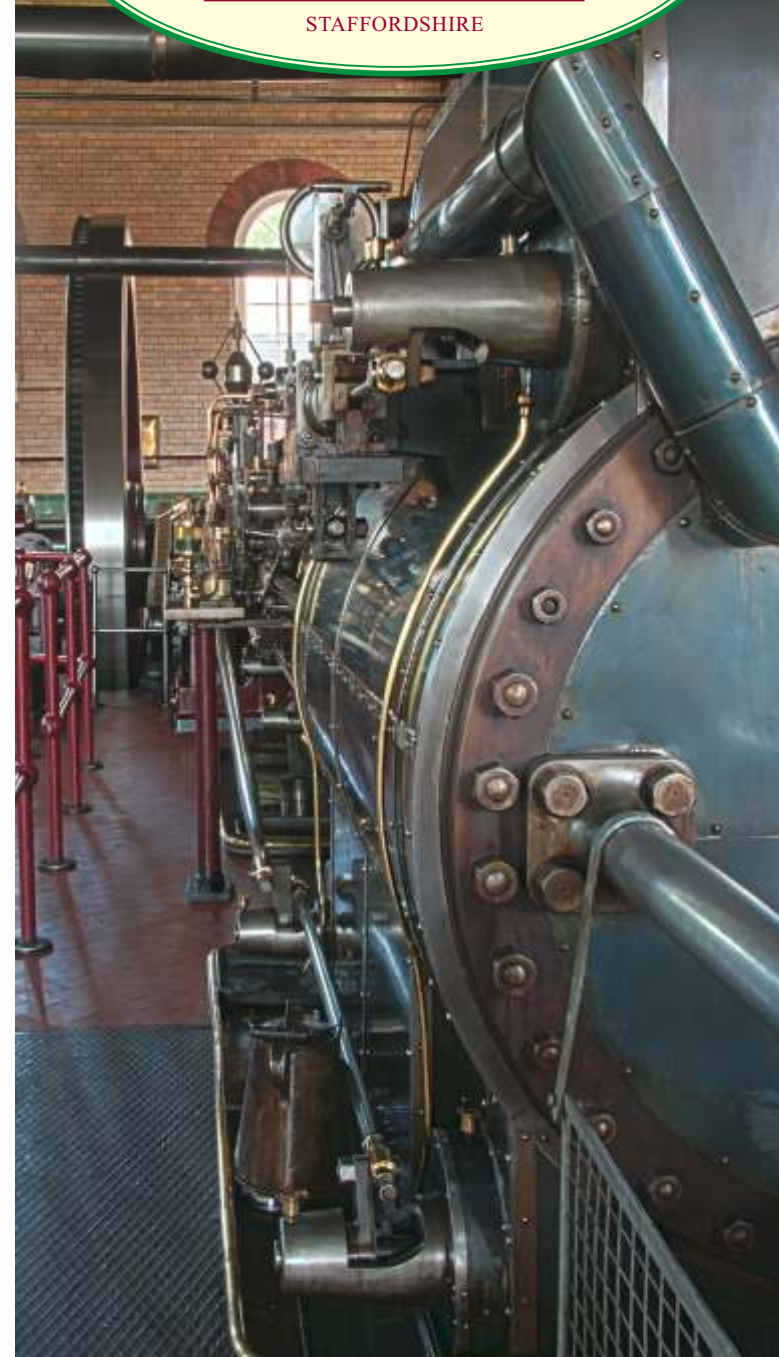
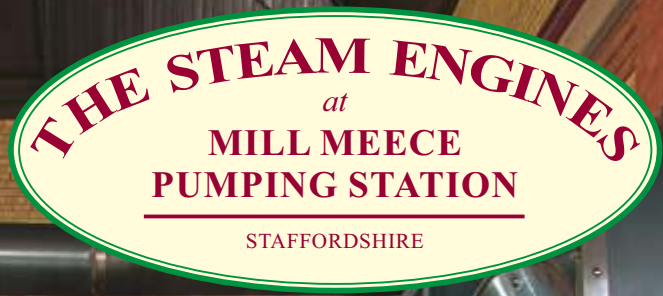


The Mill Meece Pumping Station Preservation Trust Ltd., Cotes Heath, Near Eccleshall, Staffordshire, ST21 6QU

Registered Charity No.: 515800



E-mail: millmeece@millmeecepumpingstation.co.uk
www.millmeecepumpingstation.co.uk



Mill Meece Pumping Station

Come and See

Two magnificent steam engines
that pumped more than three million
gallons of water each day

Three massive boilers
that used 35 tons of coal each week

The giant water pumps
that could lift a bath full of water
in two seconds!

A fascinating exhibition
telling the story of water and the
history of the pumping station

Souvenir shop and picnic site

You're welcome!

The pumping station is open most Sundays
during the year, from 12:00 noon to 5 pm.
Admission is free when the Gentle Giants
are at rest.

During the summer there are steam
weekends and special events. Admission is
charged, with concessions for senior citizens
and children, under 5's get in free.
There is also disabled access to all parts of
the buildings and site.

*The Gentle Giants
were the last tandem
compound engines in
service, working up
until December 1979.
They are now the only
pair of engines of
their type still in
working order in
Britain*



*There are special
events for all ages and
interests with regular
rally events held in the
grounds of the station*



*The steam
engines may
look the same,
but they are
not identical
twins - come
and discover
the difference!*



*Do you know how a
steam engine works?
If not, our friendly
volunteers will be
pleased to explain*



*How did the Duke of
Sutherland help the
Potteries?
Find out in our
fascinating exhibition*

